

APP-00848 Split Core Current Transformer™

Applications

- √ Watt-hour meters
- √ Sub-metering
- √ Power Monitoring
- √ Current Measurements
- √ Over/Under Current Sensing

Features

- √ High Accuracy
- √ Low Phase Angle Error
- √ Small Size
- √ Nickel Alloy Core
- √ Removable Leg

Specifications

Standard: 5A=0.5V
 Accuracy: 0.5A to 100A 0.6% @ 60Hz
 Continuous Rating 100A
 Maximum Current 130A
 Max Phase Angle Error: +/-60min @ 60Hz
 Voltage Rating: 600VAC
 Bandwidth: 40Hz to 1KHz
 Operating Temperature: -20°C to 50°C
 Operation: Indoor
 Case Material: ABS Thermoplastic
 Removable Leg Screws: Knurled Nylon
 Overallsize: 2"H x 2.5"W x 1"D
 Conductor Thru Hole Diameter: 0.4"
 Up to 100' Twisted Leads
 Black Wire Pos. W/ Arrow Towards Current Source



Ordering Information

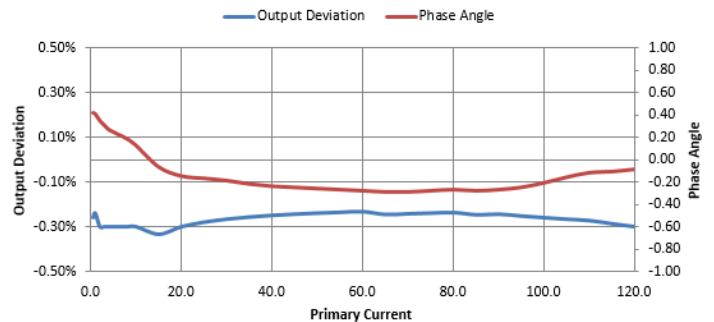
Part Number = APP-00848-XXXmV
 Where XXX = Your Desired Millivolt
 Output with 5 Amps Through the Primary

Example: APP-00848-500mV

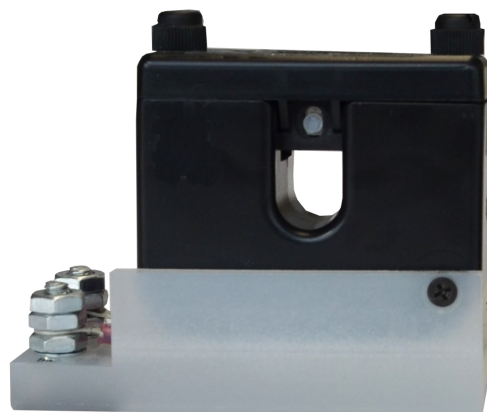
Example: APP-00848-125mV

APP-00848 Clamp On CT

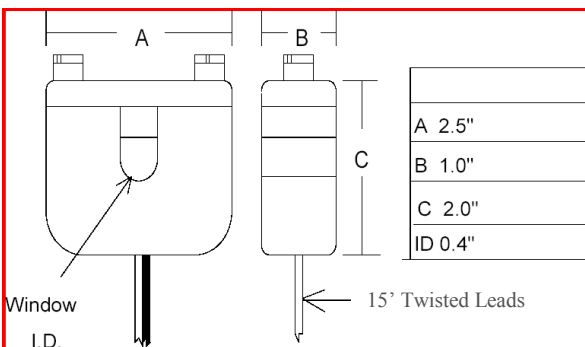
Tested from 0.5A to 120A @ 60Hz
 Tested and Calibrated with EXTERNAL 100KΩ and 50nF
 to Simulate DFR Analog Channel Input



Assembly P/N: APP00849 for 5A=500mV



Assembly P/N: APP00851 for 5A=500mV



Notes

- Based on your desired output voltage, CT turns ration will be adjusted to meet published specifications.
- Internal resistors are 1/4W.
- Longer lead lengths available.
- Removable leg contains a lapped spring loaded core that mates with the precision core in the main housing.